



www.software.ac.uk

Introducing the Institute / Getting the most out of CW20

31 March 2020, Collaborations Workshop 2020, Online

Neil Chue Hong (@npch), Software Sustainability Institute

ORCID: 0000-0002-8876-7606 | N.ChueHong@software.ac.uk

Supported
by:



BBSRC

Arts & Humanities
Research Council

EPSRC

Engineering and Physical Sciences
Research Council



NERC SCIENCE OF THE
ENVIRONMENT
Science & Technology
Facilities Council

Slides licensed under
CC-BY where indicated:



Welcome to the 12th Collaborations Workshop!



2020 – Online!

2019 – West Park Teaching Hub – Loughborough University

2018 – School of Mathematics – Cardiff University

2017 – Leeds University Business School

2016 – Surgeons Hall, Edinburgh

2015 – Oxford e-Research Centre

2014 – Oxford e-Research Centre

2013 – Merton College, Oxford

2012 – Queen's College, Oxford

2011 – e-Science Institute, Edinburgh

2010 – e-Science Institute, Edinburgh

2009 – e-Science Institute, Edinburgh

Software Sustainability Institute

“A national facility for cultivating better, more sustainable, research software to enable world-class research”



Providing to the wider community:
expertise, services, tools, events, policy,
guidance, data, opportunities, ...

Supported by the UK Research Councils through grants EP/H043160/1, EP/N006410/1 and EP/S021779/1, with additional project funding from Jisc. A collaboration between the universities of Edinburgh, Manchester, Oxford and Southampton.

Software

Helping the community to develop software that meets the needs of reliable, reproducible, and reusable research



Training

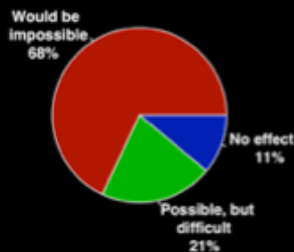
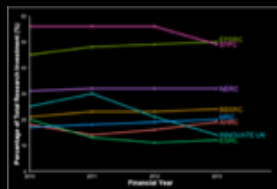
Delivering essential software skills to researchers via CDTs, institutions & doctoral schools



Outreach

Exploiting our platform to enable engagement, delivery & uptake

Collecting evidence on the community's software use & sharing with stakeholders



Bringing together the right people to understand and address topical issues



Policy

Community

Top Tips for Unconferencing



www.software.ac.uk

- You're a participant, not an audience
- Be kind to yourself and to others
- Find the session that fits you
- The journey is as important as the destination

~~*This is an event where it's normal for someone
you don't know to join a conversation*~~

Things aren't normal – they're different



You're a participant, not an audience



www.software.ac.uk

- Share knowledge, not just views
- Amplify good ideas, and give credit and praise
- Invite feedback
- But don't forget to listen

Be kind to yourself, and to others



www.software.ac.uk

- Get up and stretch, take breaks
- Be more tolerant of snags and issues
- Follow our Code of Conduct
- Point out non-inclusive behavior to us
- Use online spaces respectfully

Find the sessions that fit you



www.software.ac.uk

- If a session isn't a good fit for you, leave and find one that suits you more
- If someone leaves of your session, don't assume it's because the presentation is bad

The journey is as important as the destination



www.software.ac.uk

- Follow the virtual Pac-Man rule: leave pauses and invite others to join the conversation
- Try to meet new people
- No idea is too trivial
- *This is a big journey into the unknown for us all*

Decide what you want to
achieve and find the people
who can help you do it

Enjoy CW20!
#CollabW20